

2024

Outdoor
Stainless Steel Seating

HOLLAND
— BAR STOOL —

Enduring quality, design and passion.



304 Stainless Steel Seating with Breeze Vinyl

Superior craftsmanship, comfort, and sophistication meet in our 304 Stainless Steel Seating Series featuring outdoor-rated cushions with Breeze vinyl.

Commercial quality materials, construction, and finishes provide strength, durability, and a long-lasting, rich appearance. Our 304 Stainless Steel chairs and stools are created with 16-gauge, 1.25" steel tubing with solid MIG welded joints. All hardware is stainless steel - from the seat staples, to the nuts, bolts, and screws needed for assembly. The durable finish resists rust, chips, and abrasions to withstand all-weather elements for enduring function and beauty.

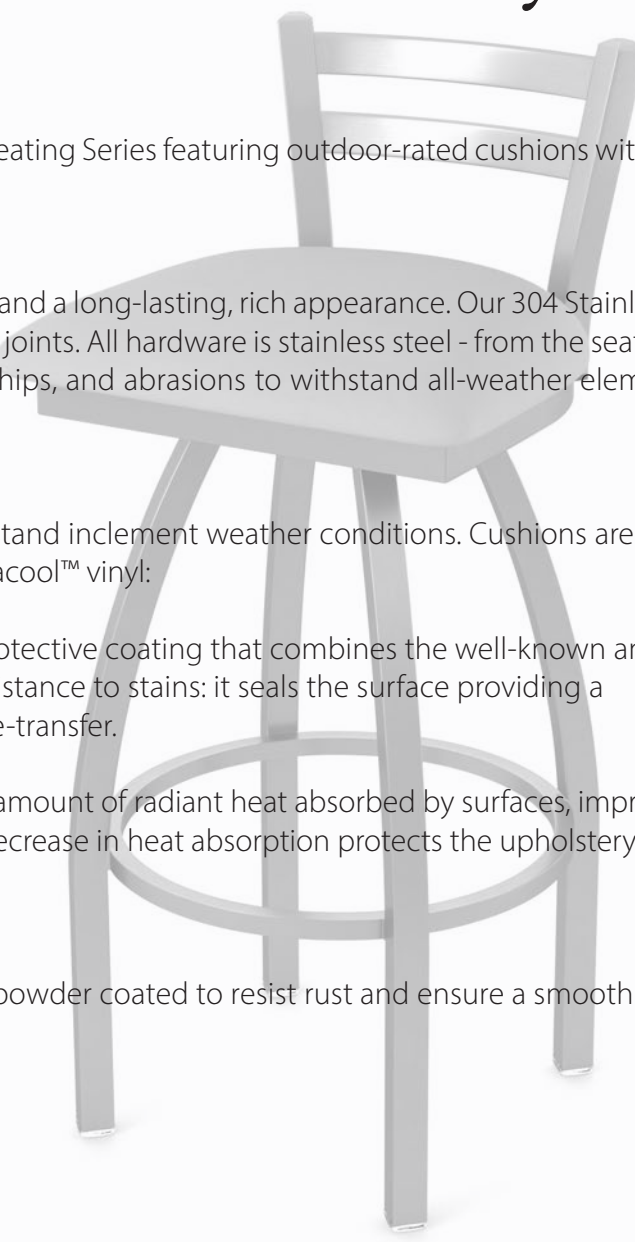
The seat cushions are constructed of a moisture-proof polycarbonate blank to withstand inclement weather conditions. Cushions are finished using your selected color of outdoor-rated Breeze with Permablok® Plus+ and Permacool™ vinyl:

Breeze vinyl with Permablok® Plus+ from Spradling® is a newly developed protective coating that combines the well-known and proven Permablok® formula (anti-stain and anti-abrasion) with enhanced resistance to stains: it seals the surface providing a shield against stains, makes cleaning easier, and improves the removal of dye-transfer.

Permacool™ is highly advanced reflective protection designed to reduce the amount of radiant heat absorbed by surfaces, improving the thermal sensation of upholstery during hot sunny days. In addition, the decrease in heat absorption protects the upholstery from added stress for superior longevity of your creations.

Swivel stools feature our encased 52 stainless steel ball bearing swivels. Swivels are powder coated to resist rust and ensure a smooth rotation for a quality seating experience.

Please visit our website for additional information, including recommended cleaning procedures.





#OD410: SS Jackie 2
Shown: Breeze Sidewalk



#OD810: SS Contessa 2
Shown: Breeze Farro



#OD820: SS Catalina 2
Shown: Breeze Sapphire

Details

Frame: 304 Stainless Steel
 Seat: Moisture-proof polycarbonate w/Breeze Vinyl
 Swivel: S-360 (standard), Memory

SH	H	BRH	BRW	SD	SW	FRH
25	38.5	14.5	16.5	16	17	7
30	43.5	14.5	16.5	16	17	12
36	49.5	14.5	16.5	16	17	15

Visit hollandbarstool.com for more details.
 See page 9 for abbreviations.
 Measurements are in inches. Minor variations in size may occur.



#OD411 SS Adeline
Shown: Breeze Graphite



#OD802: SS Misha
Shown: Breeze Champagne

Details

Frame: 304 Stainless Steel
 Seat: Moisture-proof polycarbonate w/Breeze Vinyl
 Swivel: S-360 (standard), Memory

SH	H	BRH	BRW	SD	SW	FRH
25	38.5	14.5	16.5	16	17	7
30	43.5	14.5	16.5	16	17	12
36	49.5	14.5	16.5	16	17	15

Visit hollandbarstool.com for more details.
 See page 9 for abbreviations.
 Measurements are in inches. Minor variations in size may occur.



#OD400-18: SS Jackie 1 Chair
Shown: Breeze Black



#OD400: SS Jackie 1
Shown: Breeze Sidewalk

Details

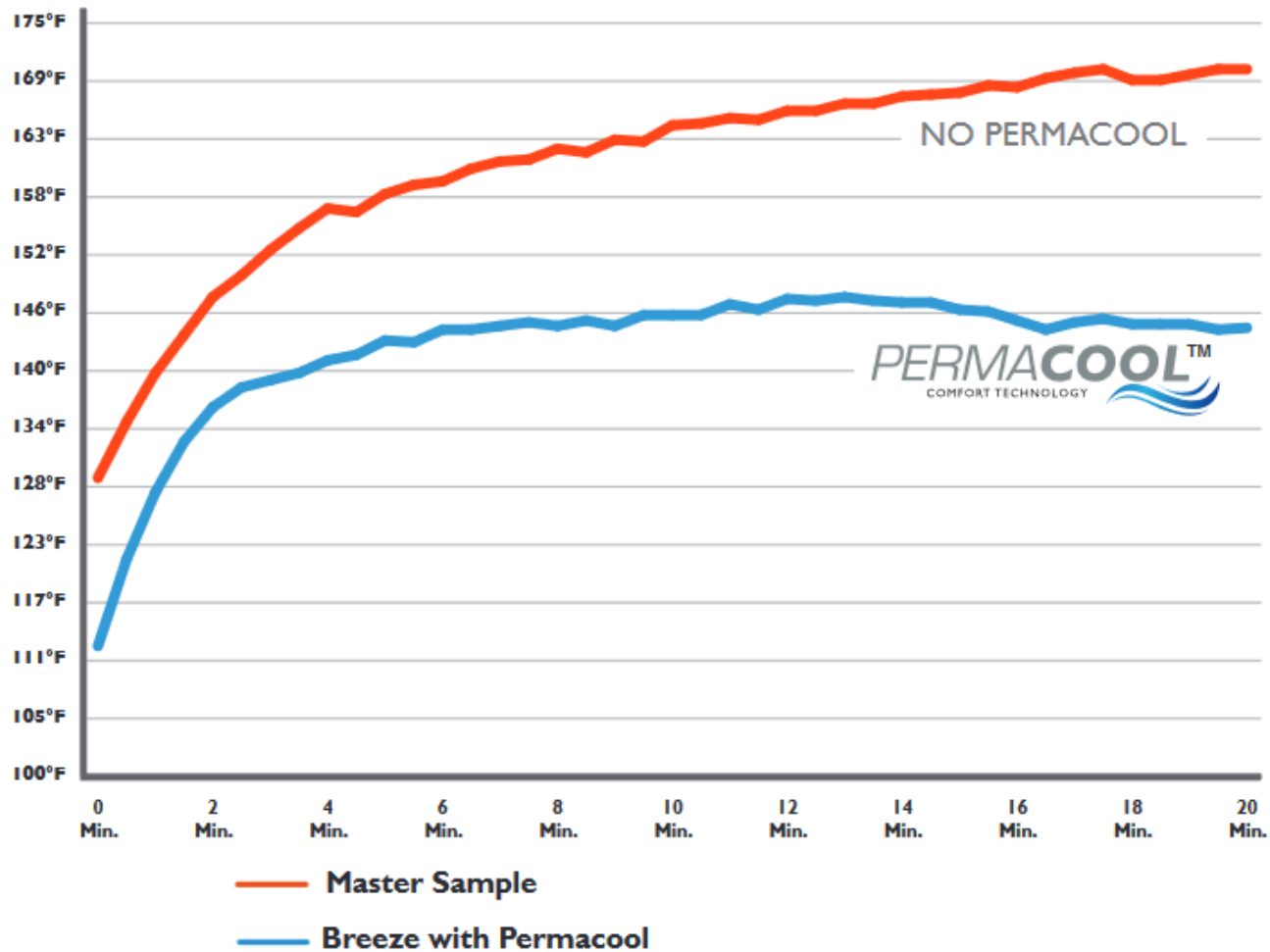
Frame: 304 Stainless Steel
 Seat: Moisture-proof polycarbonate w/Breeze Vinyl
 Stationary

SH	H	BRH	BRW	SD	SW	FRH
18	38.5	14.5	16.5	16	17	-
30	49.5	14.5	16.5	16	17	15

Visit hollandbarstool.com for more details.
 See page 9 for abbreviations.
 Measurements are in inches. Minor variations in size may occur.

Permacool™ Testing Results

Temperature measurements as stipulated by ASTM D4803**



Tests conducted under controlled scientific conditions in a laboratory, following the ASTM D -4803-10 standard (prediction of the heat build-up in rigid and flexible PVC building products above ambient air temperature, relative to black, which occurs due to absorption of the sun's energy). Temperature readings were taken every 30 seconds during the 20 minute test period with a plain black coated fabric as the test specimen (incorporating PERMACOOL technology) that is heated under an infrared reflective heat lamp to determine the temperature increase above ambient (laboratory) temperature, relative to a black control sample.

Upholstery and Frame Samples



Breeze Sapphire



Breeze Farro



Breeze Graphite



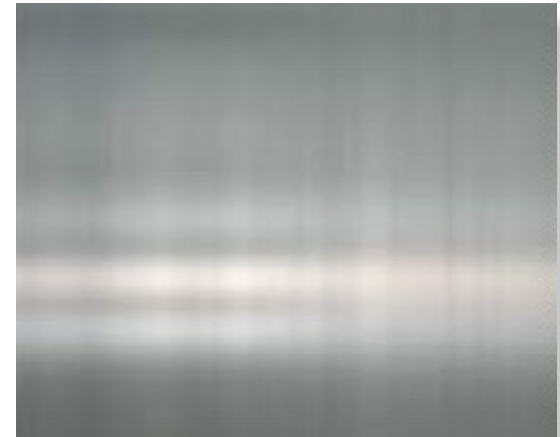
Breeze Black



Breeze Champagne



Breeze Sidewalk



304 Stainless Steel

Measuring Seating, Tables, and Space

It's important to measure your seating and tables to ensure comfort. We recommend 12" between your seat height and the top of your table, counter, or bar. Standard seat heights and terminology are:

- 18" = Chair
- 25" = Counter stool
- 30" = Bar stool

To assist with proper measurements for your seating, please refer to the diagram and information to the right.

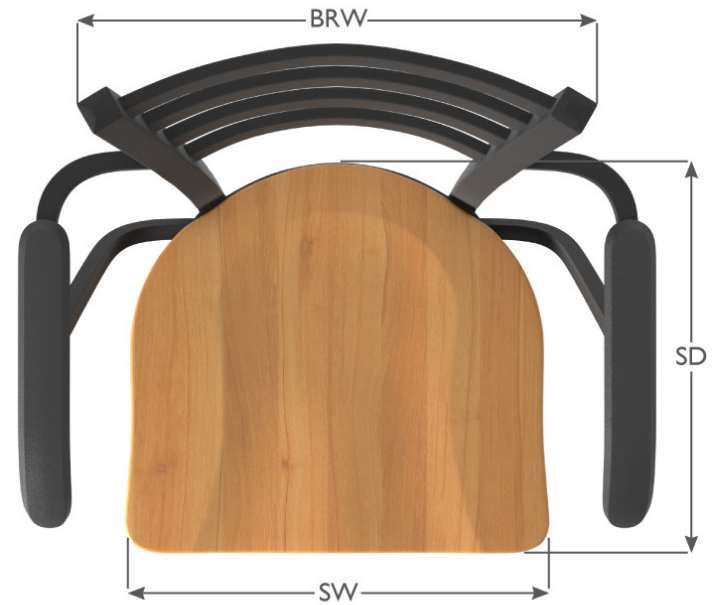
In addition, the below diagram illustrates the recommended seat height for common table, counter, and bar heights. If your table, counter, or bar is between the heights shown below, please contact us. We offer custom heights for many seating styles.



Measuring your space is also important. To calculate how many stools you will need for your space, measure your counter (in feet). Next, divide by two. This will give you the approximate number of stools to best fit your space. Two feet of counter space per stool is a comfortable arrangement for most Holland Bar Stool seating.

HOLLAND

— BAR STOOL —



Abbreviaton	Meaning
SH	Seat Height
H	Height
BRH	Back Rest Height
BRW	Back Rest Width
SD	Seat Depth
SW	Seat Width
FRH	Foot Rest Height
ARH	Arm Rest Height

Holland Bar Stool is no ordinary bar stool company. Founded on the principles of excellent quality, craftsmanship, and service, our distinct design, production, and customization abilities make us unique. Located in Holland, Michigan, our manufacturing has expanded into a variety of fields. What started out as a few styles of wooden stools decades ago has become Holland Bar Stool's current line of seating, tables, home decor, recreation, and game room products that combine strength and beauty to complement any entertainment space.

We stand behind every product with uncompromising quality, durability, and attention to detail. Our products have been independently tested to meet or exceed BIFMA/ANSI standards, and our highly knowledgeable and tenured team share a passion for creating value for customers. With a minimum order quantity of 1 and standard lead time of 7-10 business days, you save valuable warehouse space and inventory investment. We are happy to drop ship directly to your clients.

Let us accompany you on your design journey.

HOLLAND

— BAR STOOL —

Enduring quality, design and passion.

12839 Corporate Circle Place
Holland MI 49424
616-399-5530
hollandbarstool.com

© 2024 Holland Bar Stool Company. All Rights Reserved.